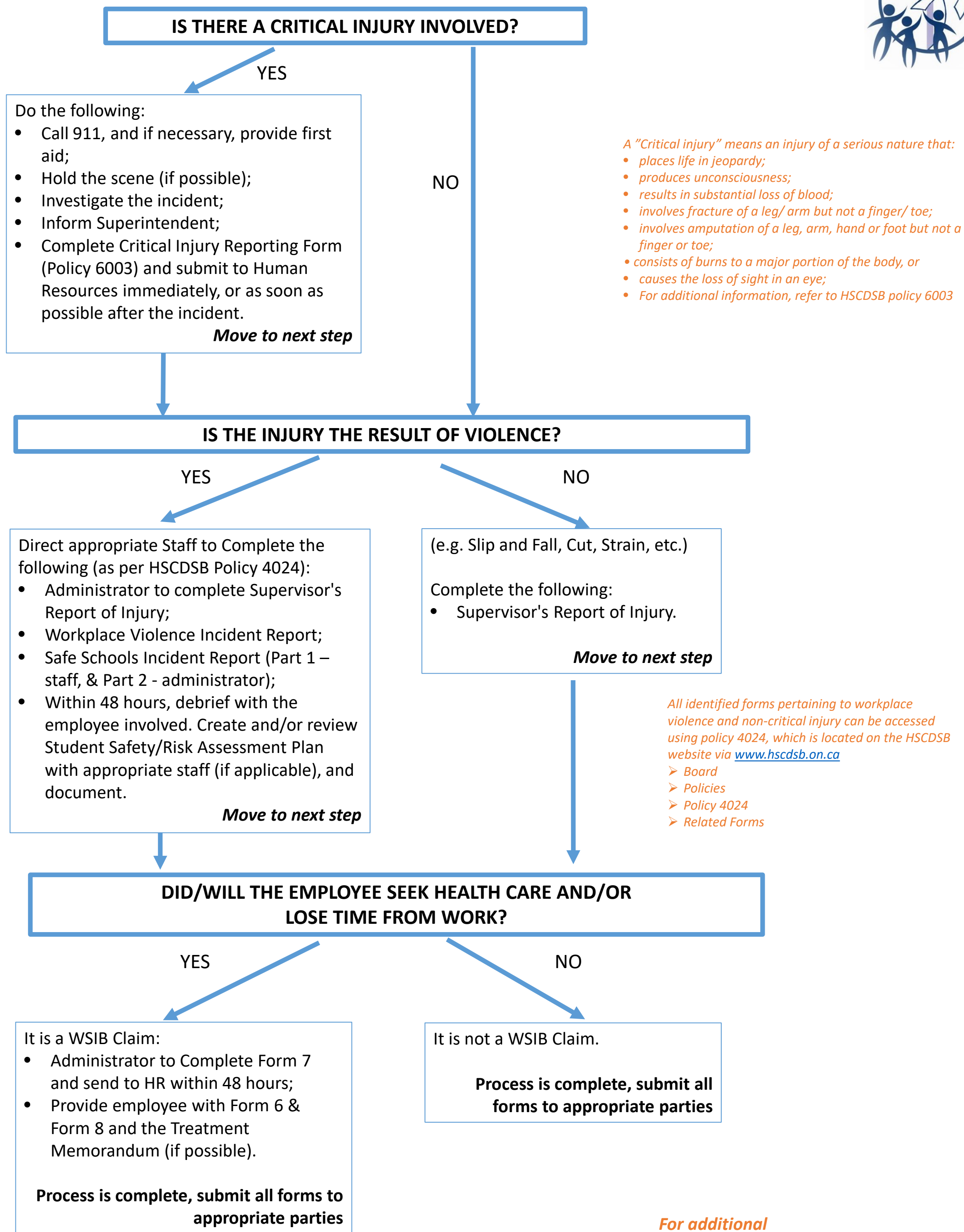


Injury Reporting Flowchart for Site Administrators



A "Critical injury" means an injury of a serious nature that:

- places life in jeopardy;
- produces unconsciousness;
- results in substantial loss of blood;
- involves fracture of a leg/ arm but not a finger/ toe;
- involves amputation of a leg, arm, hand or foot but not a finger or toe;
- consists of burns to a major portion of the body, or
- causes the loss of sight in an eye;
- For additional information, refer to HSCDSB policy 6003

All identified forms pertaining to workplace violence and non-critical injury can be accessed using policy 4024, which is located on the HSCDSB website via www.hscdsb.on.ca

- Board
- Policies
- Policy 4024
- Related Forms

For additional questions/clarification, please contact the Human Resources Department